

Skipping Spaces

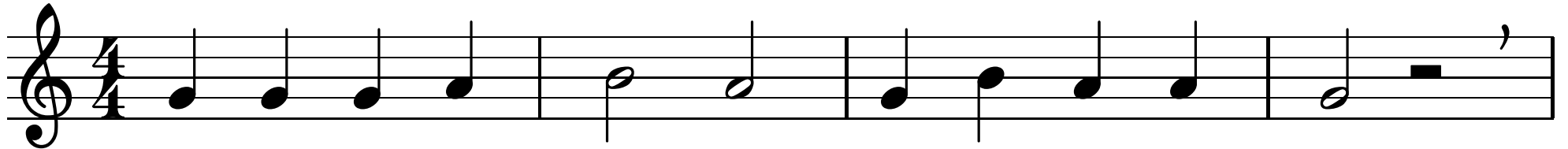
B B G B B G B B G G B B G

Frog in the Meadow

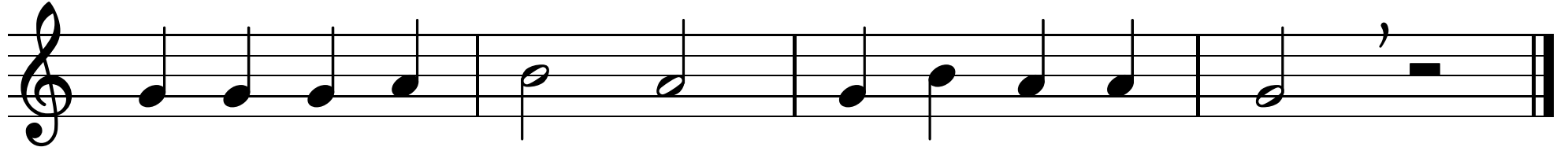
Frog in the mea - dow, Can't get him out!

Take a lit - tle stick and Stir him a - bout!

Au Claire de la Lune ^{4th - Orange}



At your door I'm knock - ing, by the pale moon light.



Lend a pen I beg you, I've a word to write.

Lonely Elephant

Musical notation for 'Lonely Elephant' on a treble clef staff. The melody consists of a sequence of quarter notes: E, E, E, E, E, E, E, E, E, E, E, E. The notes are grouped into four measures of three notes each, with a fermata over the final note of each measure. The notes are labeled 'E' below the staff.

Elephants Go Bananas

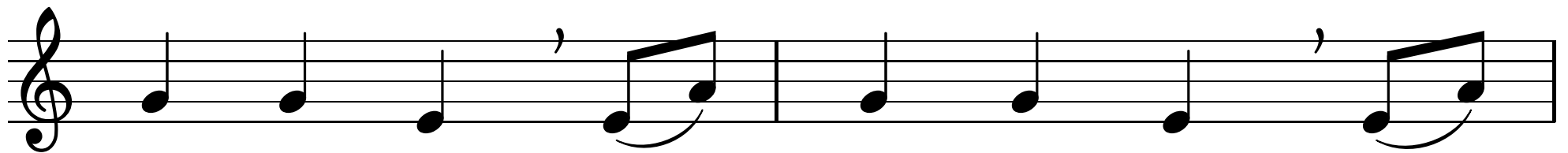
Musical notation for 'Elephants Go Bananas' on a treble clef staff. The melody consists of a sequence of quarter notes: E, E, G, E, E, G, E, E, G, E, E. The notes are grouped into four measures: the first three measures have three notes each, and the fourth measure has two notes followed by a whole note. The notes are labeled 'E', 'E', 'G', 'E', 'E', 'G', 'E', 'E', 'G', 'E', 'E' below the staff.

Musical notation for 'Elephants Go Bananas' on a treble clef staff. The melody consists of a sequence of quarter notes: G, G, B, G, G, B, B, G, E. The notes are grouped into four measures: the first three measures have three notes each, and the fourth measure has two notes followed by a whole note. The notes are labeled 'G', 'G', 'B', 'G', 'G', 'B', 'B', 'G', 'E' below the staff.

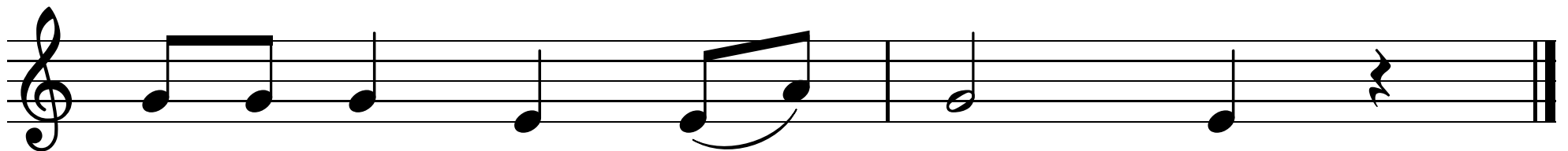
It's Raining



It's rain - ing it's pour - ing, the old man is snor - ing.



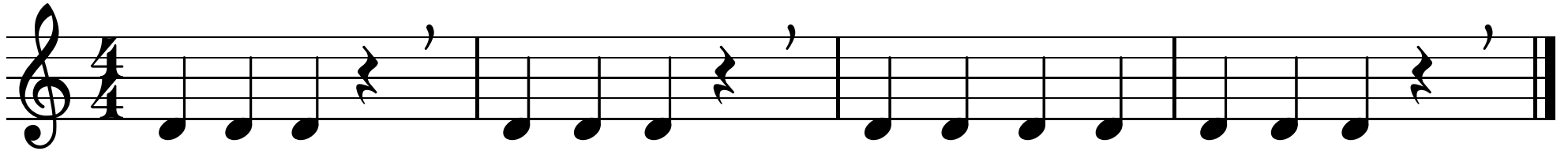
Went to bed and he bumped his head and he



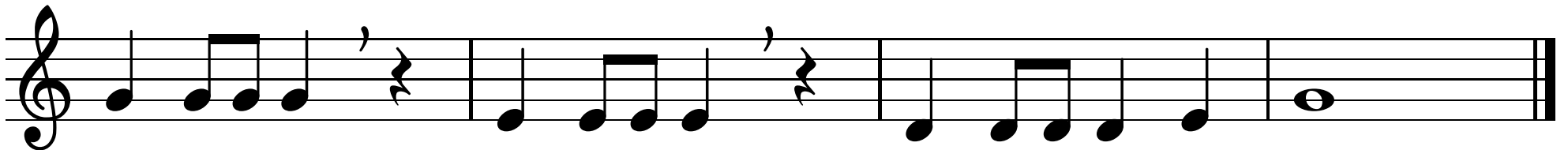
could - n't get up in the morn - ing.

Just DO it!

4th - Blue



Dinos Eating Green-things for Dinner

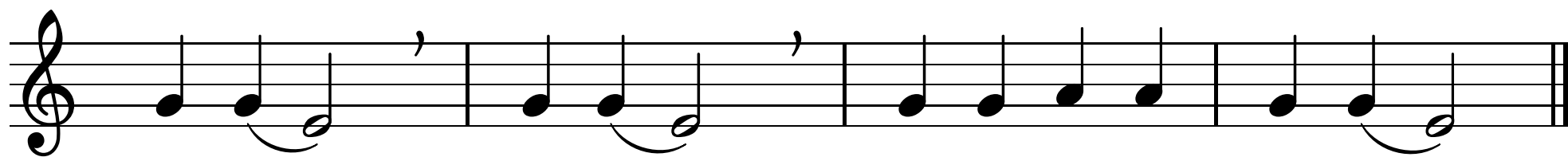


Starlight



Star light, star bright, first star I see to-night,

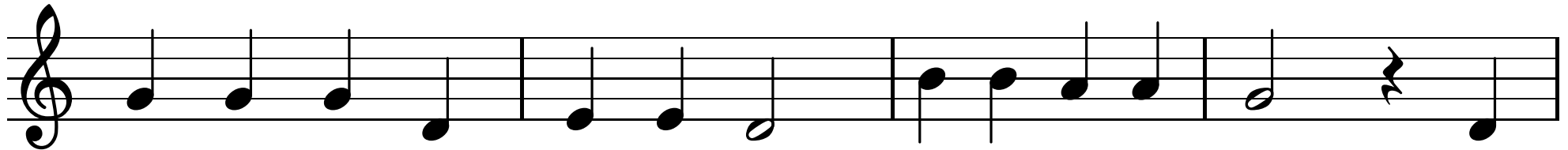
The first line of musical notation is written on a single staff in 4/4 time. It begins with a treble clef and a 4/4 time signature. The melody consists of the following notes: G4 (quarter), A4 (quarter), B4 (quarter), A4-G4 (half), F#4 (quarter), E4 (quarter), D4 (quarter), C4 (quarter), B3 (quarter), A3 (quarter), G3 (quarter), and F#3 (quarter). There are two fermatas above the B4 notes in the second and third measures.



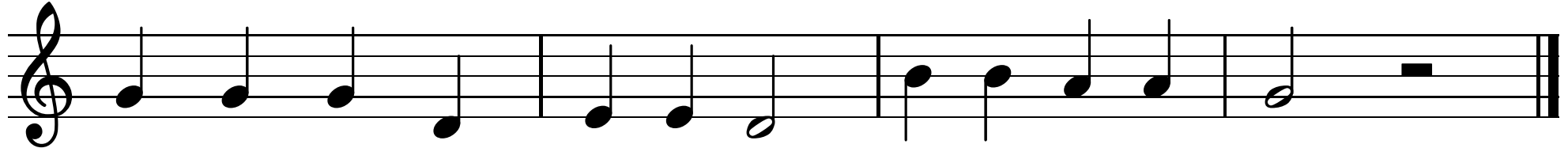
Which I may, wish I might, have the wish I wish to-night.

The second line of musical notation continues on a single staff in 4/4 time. The melody consists of the following notes: G3 (quarter), F#3 (quarter), E3 (quarter), D3 (quarter), C3 (quarter), B2 (quarter), A2 (quarter), G2 (quarter), F#2 (quarter), E2 (quarter), D2 (quarter), C2 (quarter), B1 (quarter), and A1 (quarter). There are two fermatas above the B4 notes in the second and third measures. The line ends with a double bar line.

Old McDonald



Old Mc-Don-ald had a farm. E I E I Oh! And



on that farm he had a____ E I E I Oh!